

CXX™ Catalytic Converter

Single or Multi-Element Catalytic Converter for the Control of NOx, CO, NMHCs, VOCs & HAPs

Features:

- >> For IC Engines 50-500 HP
- >> Multiple Applications: Gas Compression, Power Generation, Irrigation, Pumping, Standby Equipment, Pump Jacks
- >> 3-Way or 2-Way Conversion
- >> Easy Access to the Catalyst
- >> Compact, Lightweight and Flexible Design
- >> Stainless Steel Construction

Fuels:

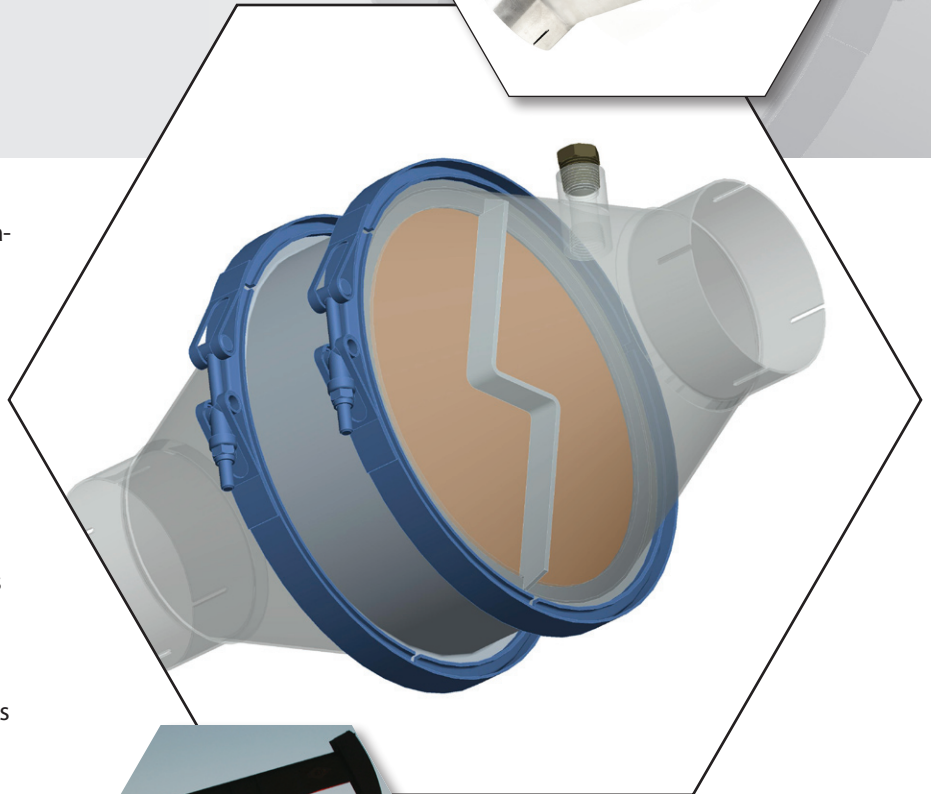
- >> Natural Gas
- >> LPG
- >> Propane
- >> Diesel
- >> Dual Fuel
- >> Biodiesel

Johnson Matthey's single or multi-element **CXX™** catalytic converters are specially designed for easy access to simplify installation, maintenance and catalyst replacement. These converters reduce emissions from IC engines, 50 to 500 hp, and are available in a variety of standard sizes.

Built-In Flexibility, Easy Access

CXX catalytic converters are designed so that you can access the catalyst with ease. The flexible multi-element design allows for additional elements to simply be locked in. That means you buy only what you need now, but as needs or regulations change, you can add on and be sure of compliance. Access is further simplified with quick-release clamps for maintenance and replacement. With the **CXX**, you'll save time, effort and expense every time you need to access the catalyst.

Plus, if you need a catalyst replacement, simply open the latches and the catalyst is easily removed, leaving the converter in place. There's no need to replace the entire housing. The **CXXs** lightweight converter can be installed and ready for operation in minutes.



Johnson Matthey
Stationary Emissions Control

www.jmsec.com

Suite 200, 400 Lapp Road, Malvern, PA 19355, USA

TEL: (484) 320-2136, FAX: (484) 320-2152

E-MAIL: info@jmsec.com

CXXTM Catalytic Converter

Johnson Matthey's advanced catalyst technology and state-of-the-art brazed elements deliver maximum strength, durability and performance.

Exceptional Strength and Longevity Through Cutting-Edge Brazing Technology

At the heart of the **CXX** catalyst element is state-of-the-art brazing technology that delivers superior strength and durability. Instead of using mechanical means, each layer of our catalyst element is securely bonded to each other by brazing. This creates unparalleled resistance to element sagging, distortion and unraveling due to engine operating conditions.



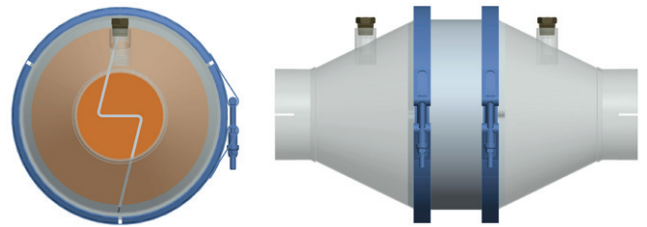
Johnson Matthey's advanced technology and proprietary composition and design ensure maximum catalyst performance. Our metal monoliths, which are brazed thin-walled, stainless steel honeycomb supports, are nearly impervious to damage from mechanical or thermal shock

and metallurgic erosion. The unique design and construction of Johnson Matthey catalysts reduces back pressure for fuel savings, reduces engine wear and extends catalyst life. Manufactured using durable and highly dispersed platinum group metals (pgms), our catalysts provide the highest catalytic activity and poison resistance available today.

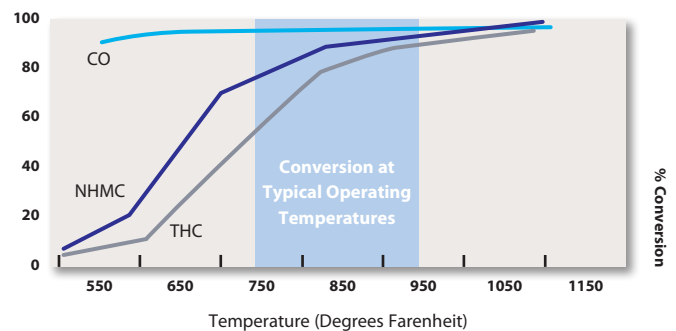
Superior Performance

CXX converters employ an NSCR 3-way catalyst that simultaneously reduces NO_x, CO and HC emissions or a 2-way oxidation catalyst to reduce HCs and CO. The **CXX** can destroy up to 99% of these pollutants, including Acetaldehyde, Formaldehyde, Acrolein and Methanol, by converting them into environmentally safe nitrogen, carbon dioxide and water.

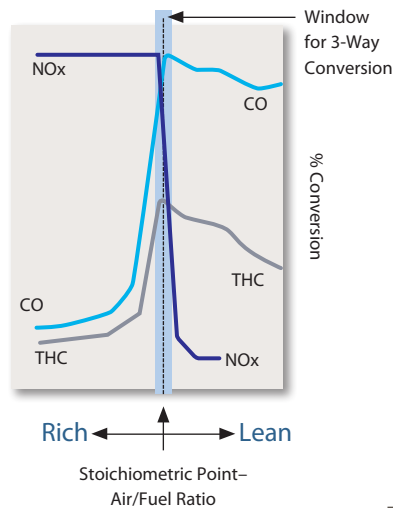
With **CXX**, your engines will meet the most severe federal, state, county and city air emissions regulations while maintaining peak operating efficiency and maximum cost effectiveness. Johnson Matthey's total systems approach provides all of the monitoring, testing and service resources you need—before, during and after the installation.



TYPICAL 2-WAY NATURAL GAS LEAN-BURN CATALYST PERFORMANCE



TYPICAL 3-WAY RICH-BURN CATALYST PERFORMANCE



Johnson Matthey
Stationary Emissions Control

Suite 200, 400 Lapp Road, Malvern, PA 19355, USA

TEL: (484) 320-2136, FAX: (484) 320-2152

E-MAIL: info@jmsec.com

www.jmsec.com